

The DRS 2006 Radio Streamer Manager

The DRS 2006 Radio Streamer Manager is a listener and bandwidth usage statistical analysis software. Very basically it will tell you how much bandwidth your stream or multiple streams are using, and how many listeners per stream you have. This software is FREE for all DRS 2006 Radio Streamer customers. The link can be found in your order email which also contains your stream access information.

One possible use is to assess how your programming affects your listener peak, to help improve your programming. What does the listener like or dislike at any given time etc.



To begin you need to have a DRS 2006 Radio Streamer account/server running. The stats are automatically created and sent to the DRS 2006 Radio Streamer Manager from our servers. WMA Stats only work with the DRS 2006 Radio Streamer Service, since our servers run a server side stats software. This software generates the stats which are grabbed by the DRS 2006 Radio Streamer Manager.

Your first task is to start by entering a station into the main interface. Click on Add New Server.

The screenshot shows the 'Add New Server' dialog box. It has the title 'DRS 2006 The radio automation software'. Below the title, it asks for 'SHOUTcast User URL (http://server:Port) or Windows Media User URL (http://servername)'. The input field contains 'http://rs5.radiostreamer.com:16000'. Below that, it asks for 'SHOUTcast Password' and 'WMA Stats Port'. The password field contains '*****' and the WMA Stats Port field contains '8000'. At the bottom, there are two radio buttons: 'SHOUTcast Server' (selected) and 'Windows Media Server'. At the very bottom, there are 'Save Server' and 'Cancel' buttons.

In the first box type in your server location, for example: <http://rs5.radiostreamer.com:16000> (SHOUTcast) or <http://rs5.radiostreamer.com/drs64> (WMA). For SHOUTcast please enter your SHOUTcast Server Password and check the SHOUTcast Server button.

For WMA please check your Stats Port information matches, usually this is set by default to 8000, and check the Windows Media Server button. Now "Save Server".

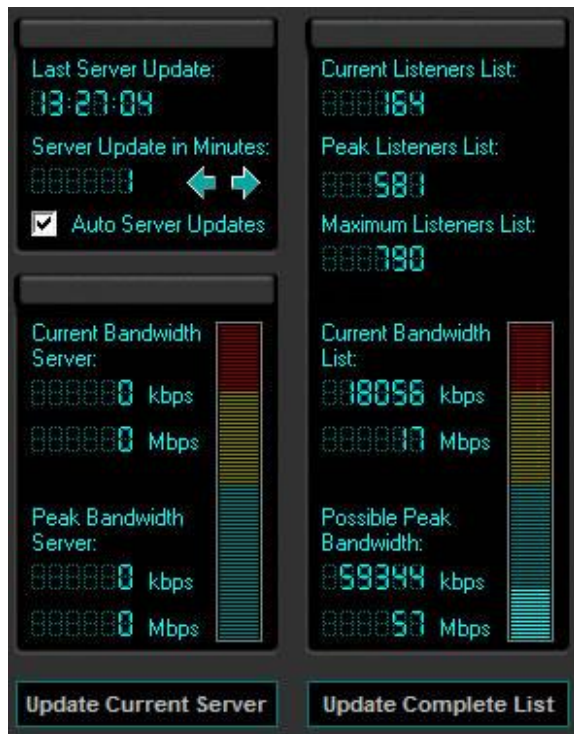
NOTE: You can also edit a server by right clicking on it in the main screen and choosing "Edit this Server". The window above will appear for you to enter new information.

Other options include "Listen to this User Stream", in the case of WMA this will directly open Media Player and begin playing this server. For SHOUTcast servers, this will prompt for you to open or save a pls-file which is usually played via Winamp. From this menu you can also "Delete this Serve" and "Add New Server".

To assist you in rearranging your servers into a more readable format, such as in order of bitrate, you can highlight a server from the main window and drag it up or down to a new location.

For future use you have an option to save the server list to a file, which you can transport to different locations, simply click Save List to save this information.

To load this information to a new location click Load List, and your servers will appear in the main window.



Above is a small control and information section, showing you exactly what is happening to your stream/s. At the moment the list is updated every 1 minute, by adjusting the green arrows and checking the Auto Server Updates button.

Presently all 5 Servers are combined, and show the current live statistics and bandwidth use. To individually identify a server, you may highlight one in the main window, and click update current server.

On a final note the time based graphical red line is a great way of assessing at a glance how your streams are performing. This will constantly update.

Need more information?

If you have any further questions, please feel free to contact our DRS 2006 Help Desk at <http://helpdesk.drs2006.com> or send us an email to support@drs2006.com